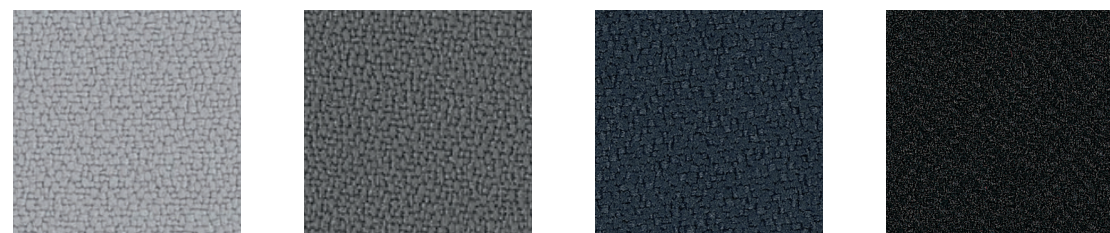
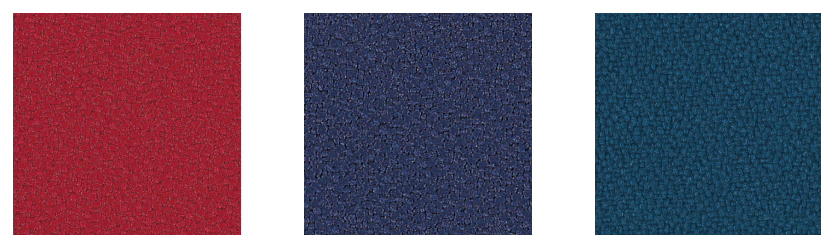


Xtreme – 100% recycled polyester – crêpe structure – stretchy – durable

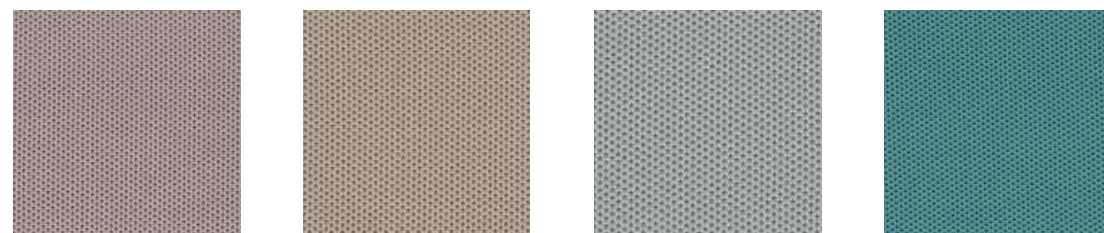


Xtreme – EXR094 Xtreme – EXR081 Xtreme – EXR145 Xtreme – EXR009

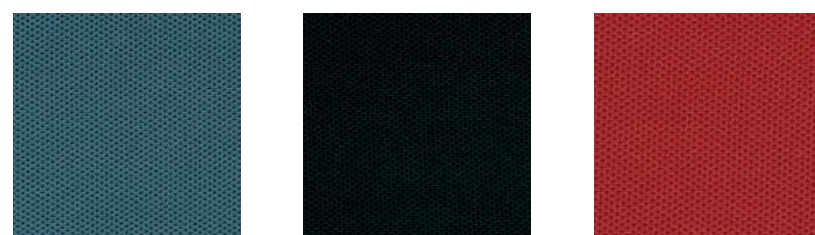


Xtreme – EXR079 Xtreme – EXR024 Xtreme – EXR026

Sprint – Polyester knit – classic design – stretch knit product



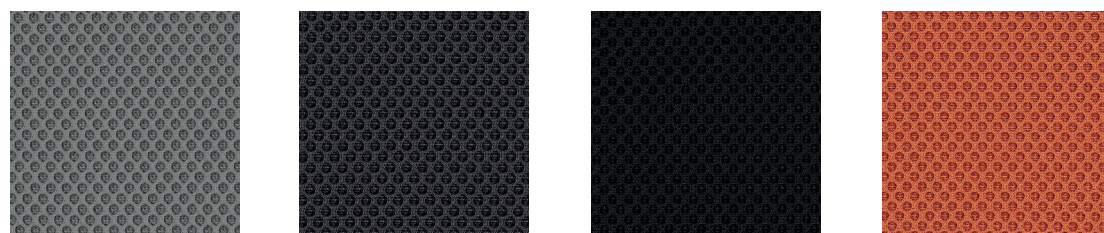
Sprint – SRT002 Sprint – SRT001 Sprint – SRT028 Sprint – SRT041



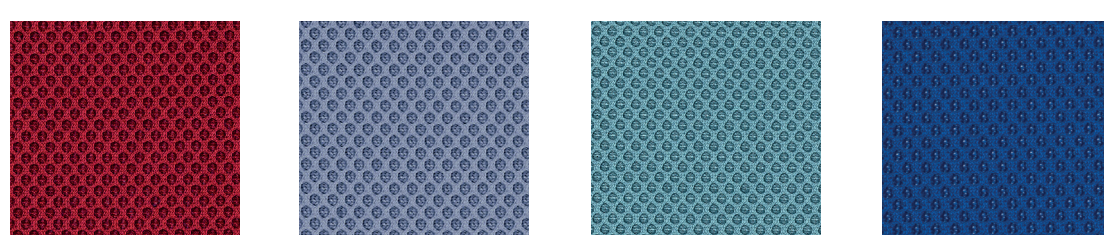
Sprint – SRT042 Sprint – SRT004 Sprint – SRT010

HÅG Conventio Wing / HÅG Capisco Puls

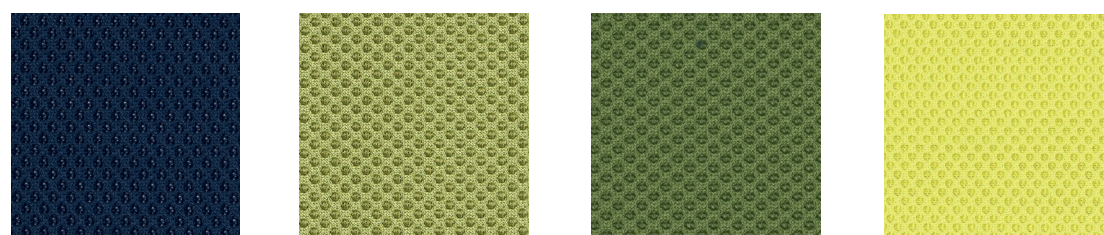
Runner – 100% recyclable polyester – soft 3D appearance – semi-transparent – mesh fabric



Runner – RUN60011 Runner – RUN60025 Runner – RUN60999 Runner – RUN63034



Runner – RUN64089 Runner – RUN65078 Runner – RUN66063 Runner – RUN66120



Runner – RUN66123 Runner – RUN68056 Runner – RUN68109 Runner – RUN68137

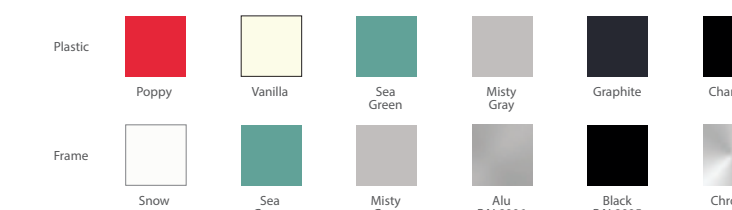
Giroflex 353 /313

Mesh by Palmhive

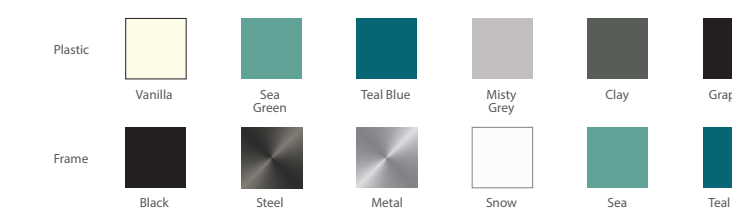


MEH001 - black MEH002 - lightgrey

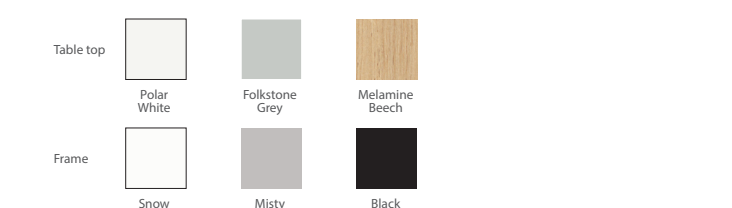
RBM Ana Plastic and Frame Colours



RBM Noor 4-leg (6050 & 6050S) & Sledgebase (6060 & 6060S) Plastic and Frame Colours



RBM u-Connect Table Top Laminate and Frame Colours



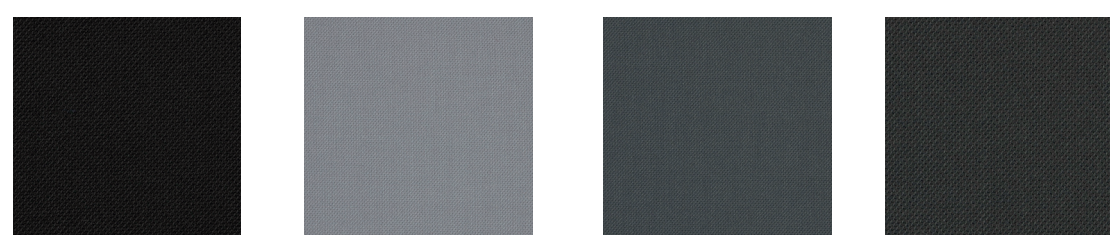
HÅG Capisco Puls Plastic Colours



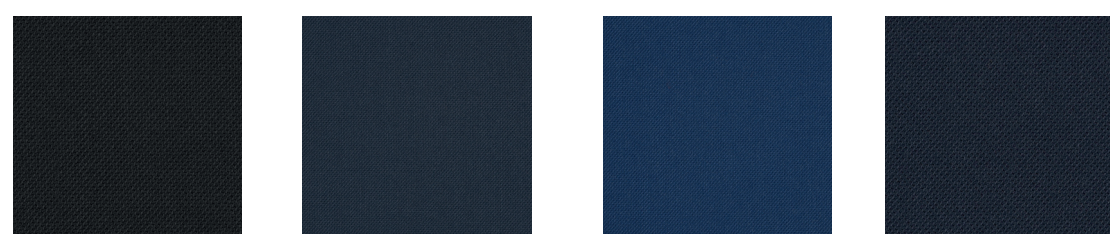
HÅG Conventio Wing Plastic Colours



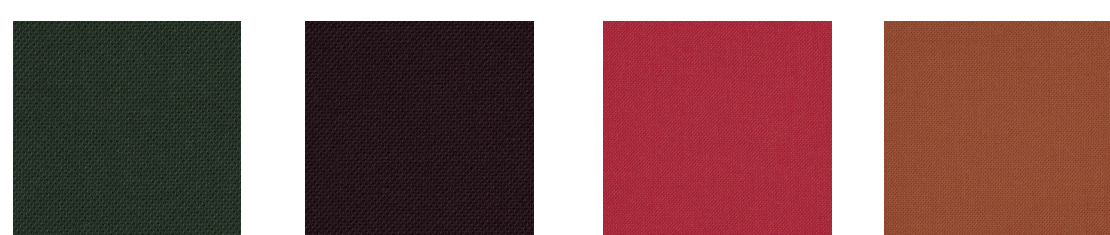
Select – New Zealand wool – diagonal relief structure – soft – durable



Select - SC 60999 Select - SC 60139 Select - SC 60003 Select - SC 60134



Select - SC 60051 Select - SC 66194 Select - SC 66071 Select - SC 66144



Select - SC 68209 Select - SC 61190 Select - SC 64216 Select - SC 63102

Synergy – Wool – lightly felted – soft – durable



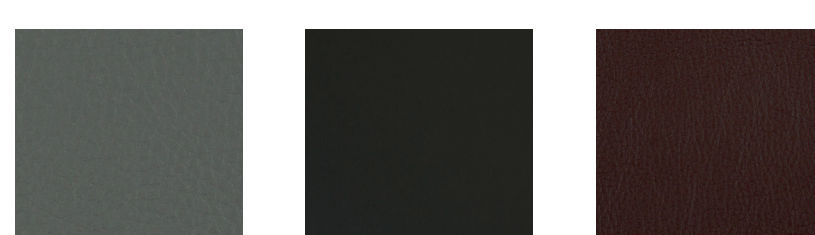
Synergy – LDS74 Synergy – LDS75 Synergy – LDS54 Synergy – LDS49



Synergy – LDS31 Synergy – LDS16 Synergy – LDS24 Synergy – LDS17

HÅG SoFi 7300 / HÅG SoFi 7500

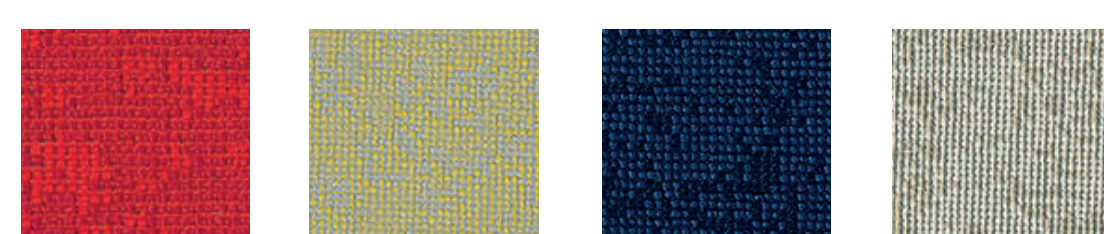
Paloma soft – Semi-aniline leather – chrome-free – soft – high durability



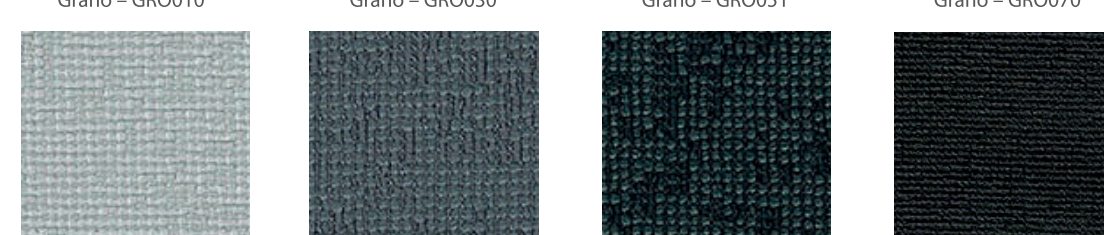
Paloma Soft – ATG55115 Paloma Soft – ATG56100 Paloma Soft – ATG55130

HÅG Capisco

Grano

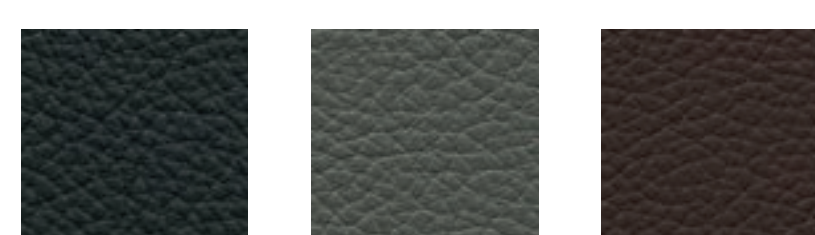


Grano – GRO010 Grano – GRO030 Grano – GRO051 Grano – GRO070



Grano – GRO091 Grano – GRO092 Grano – GRO094 Grano – GRO099

Natura



Natura – LE 120 Natura – LE 121 Natura – LE 124

Giroflex 64



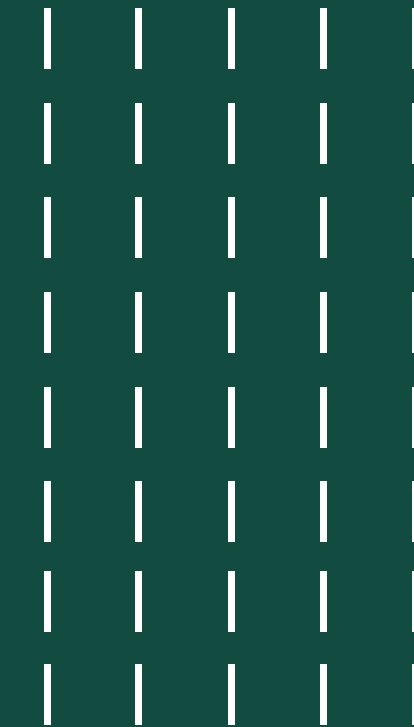
Giroflex 64

SoFi Mesh



Fabrics & Colours

for HÅG, RBM & Giroflex in Poland & Eastern Europe



TECHNICAL SPECIFICATIONS

	XTREME by Camira	SELECT by Gabriel	SPRINT by Camira	SYNERGY by Camira	PALOMA SOFT by Wollsdorf	RUNNER by Gabriel	GRANO by Climatex	NATURA leather	MESH by Palmhive
COMPOSITION (%)									
Wool	-	85	-	95	-	-	18	-	-
Polyamide	-	15	-	5	-	-	69	-	-
Polyester	-	-	100	-	-	100	13	-	100
Recycled Polyester	100	-	-	-	-	-	-	-	-
Bull hides	-	-	-	-	100	-	-	100	-
ENVIRONMENTAL FACTS									
EU Ecolabel	◆	◆	-	◆	-	-	-	-	-
Oeko-Tex® Standard 100	◆	◆	-	-	-	◆	◆	-	◆
ISO 14001 certified (company)	◆	◆	◆	◆	◆	◆	-	-	-
100% free of heavy metals	◆	◆	◆	-	◆	◆	-	-	-
ECO_L	-	-	-	-	◆	-	-	-	-
Blue Angel RAL-U2 148	-	-	-	-	◆	-	-	◆	-
Chrome-free leather tanning	-	-	-	-	◆	-	-	-	-
Cradle to Cradle	-	-	-	-	-	◆	◆	-	-
FLAMMABILITY									
BS EN 1021 – Cig. & Match	◆	◆	◆	◆	◆	◆	◆	◆	◆
BS 5852 0/1	-	-	-	-	-	-	◆	-	-
B5852 part 1 source 0,1	-	-	-	-	-	-	-	◆	-
BS 7176 Low Hazard	◆	-	◆	◆	-	-	-	-	-
BS 7176 Medium Hazard	◆	-	-	-	-	-	-	-	-
NF D 60-013	◆	-	-	-	-	-	-	-	-
DIN 4102 BI	◆	-	-	-	-	-	-	-	-
B5 5852 P 2 crib 5	◆	◆	-	-	◆	-	-	-	-
CA TB 117-2013	-	◆	◆	-	-	◆	◆	◆	-
IMO MSC 307 (88) Annex 1 part 8	-	◆	-	-	◆	-	-	-	-
FASTNESS TO RUBBING									
Dry	4	4-5	4	-	1000/4	4-5	4-5	5	-
Wet	4	4-5	4	-	80/4	4-5	4	4	-
OTHER									
Weight (g/m)	435	510	325	400	-	320	450	-	-
Width (cm)	140	140	140	140	-	160	141	-	-
Abrasion (Martindale)	100 000	200 000	100 000	100 000	-	70 000	465 000	-	150 000
Pilling	4	4	4-5	-	-	5	4	-	4-5
Light fastness	6	5-8	6	5	6	5-7	6	5	-

MAINTENANCE

To be vacuumed with a furniture brush or wiped with a clean, white cloth or sponge slightly dampened with clean lukewarm water.

camirafabrics.com
gabriel.dk
wollsdorf.com